



Unicorn

Dye Sublimation
Comprehensive Solution

Connecting Smart Printing

Pioneering the Digital Era of Textile Printing

Shenzhen HOMER Textile Tech Co.,Ltd.

www.hanglorygroup.com

Add: No. 28, Gaoke Avenue, Baolong Subdistrict, Longgang District, Shenzhen, China (HanGlory Tower)

Tel: (+86)0755-2308 0896 **Fax:** (+86)0755-2321 7841 **E-mail:** info@hanglorygroup.com

Note: The above technical parameters are subject to change without prior notice, and are subject to actual equipment.

V1.0/2025



Unicorn Dye Sublimation Series

— Unicorn 180X

Optional Models: Unicorn 1808 / Unicorn 1812 / Unicorn 1816

Unicorn 180X series Adapts to Maximum 1.8m Print Width Demand

X Represents Printhead Configuration: 8 / 12 / 16 (Full Configuration)

Unicorn 1816

New leap in production capacity, unleashing strong productivity

	16 Max.No. Printhead	4-8 Color Mode	1800 mm Max. Print Width	1900 mm Max. Media Width				
Resolution	300*600 dpi (1pass)	400*600 dpi (1pass)	508*600 dpi (1pass)	600*600 dpi (1pass)	300*1200 dpi (2pass)	400*1200 dpi (2pass)	508*1200 dpi (2pass)	600*1200 dpi (2pass)
Max. Print Speed	745 m ² /hr	682 m ² /hr	589 m ² /hr	499 m ² /hr	413 m ² /hr	381 m ² /hr	313 m ² /hr	260 m ² /hr

Unicorn 1808

The choice for industrial flexible digital printing

	8 Max.No. Printhead	4-8 Color Mode	1800 mm Max. Print Width	1900 mm Max. Media Width		
Resolution	400*600 dpi (1pass)	508*600 dpi (1pass)	600*600 dpi (1pass)	400*1200 dpi (2pass)	508*1200 dpi (2pass)	600*1200 dpi (2pass)
Max. Print Speed	666 m ² /hr	568 m ² /hr	494 m ² /hr	333 m ² /hr	275 m ² /hr	247 m ² /hr

Unicorn 1812

6-color upgrade to strengthen the delicacy of the shallow mesh and meet the needs of spot colors

	12 No. Printhead	4-6 Color Mode	1800 mm Max. Print Width	1900 mm Max. Media Width		
Resolution	400*600 dpi (1pass)	508*600 dpi (1pass)	600*600 dpi (1pass)	400*1200 dpi (2pass)	508*1200 dpi (2pass)	600*1200 dpi (2pass)
Max. Print Speed	666 m ² /hr	568 m ² /hr	494 m ² /hr	333 m ² /hr	275 m ² /hr	247 m ² /hr



*The diagrams provided depict the exterior renderings of Unicorn 1808, Unicorn 1812 and Unicorn 1816.

Unicorn Dye Sublimation Series

— Unicorn 270X / 320X

Optional Models: Unicorn 2708 / Unicorn 3208

Unicorn 270X series Adapts to Maximum 2.6m Print Width Demand

Unicorn 320X series Adapts to Maximum 3.2m Print Width Demand

X Represents Printhead Configuration: 8 (Full Configuration)



*The diagrams provided depict the exterior renderings of Unicorn 2708 and Unicorn 3208.

Unicorn 2708

Wide-format high-speed printing solution for textile printing

	8 Max.No. Printhead	4-8 Color Mode	2600 mm Max. Print Width	2630 mm Max. Media Width		
Resolution	400*600 dpi (1pass)	508*600 dpi (1pass)	600*600 dpi (1pass)	300*1200 dpi (2pass)	400*1200 dpi (2pass)	508*1200 dpi (2pass)
Max. Print Speed	870 m ² /hr	726 m ² /hr	612 m ² /hr	490 m ² /hr	459 m ² /hr	367 m ² /hr

Unicorn 3208

Break through the boundaries of capacity & breadth and expand the potential of printing

	8 Max.No. Printhead	4-8 Color Mode	3200 mm Max. Print Width	3200 mm Max. Media Width				
Resolution	300*600 dpi (1pass)	400*600 dpi (1pass)	508*600 dpi (1pass)	600*600 dpi (1pass)	300*1200 dpi (2pass)	400*1200 dpi (2pass)	508*1200 dpi (2pass)	600*1200 dpi (2pass)
Max. Print Speed	1021 m ² /hr	921 m ² /hr	778 m ² /hr	398 m ² /hr	550 m ² /hr	496 m ² /hr	398 m ² /hr	335 m ² /hr



Unicorn Series Highlight

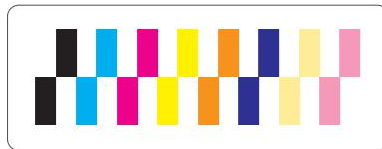
• Flexible, Efficient Printing for Media of Multiple Widths

In-house R&D core hardware/software for industrial flexible production

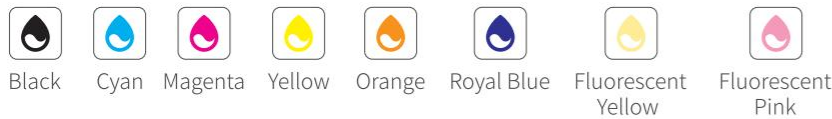
1.8–3.2m width range for diverse applications; short delivery cycles for mass production orders

On-demand textile printing transforms production processes,

helping you meet massive textile orders with shorter lead times and greater flexibility



Unicorn Series
16 Printheads 8 Colors Mode



• Optional Multi-Color Modes

4/6/8 color options for diverse needs

compatible with heat transfer paper, titanium white paper, wallpaper, film

Ideal for fashion, sportswear, home textiles, panel decoration, wallpaper, etc

• Saves Energy & Costs, Eco-Friendly & Efficient

Thin paper printing breaks through to a minimum basis weight of 29g/m², reducing raw material costs

High-concentration fast-drying ink + high-efficiency drying system, energy consumption reduced by ≈

30%, saving electricity costs

Support industrial-grade 10,000m large rolls, saving labor and time, achieving high-efficiency

production capacity



Thin paper printing
as low as 29g/m²



Energy consumption
reduced by ≈ 30%



Support 10,000-meter
large rolls



Comply with
green textile printing

Unicorn 1808 | Parameters

High Speed Roll-to-roll Dye-sublimation Printer

PRINTING INFORMATION

Printhead	4/8 Heads Industrial Grade Piezoelectric Printhead					
Print Mode	Single/Dual direction					
Resolution(DPI)	400*600 (1pass)	508*600 (1pass)	600*600 (1pass)	400*1200 (2pass)	508*1200 (2pass)	600*1200 (2pass)
Max. Print Speed(m ² /hr)	666	568	494	333	275	247
Color	CMYK					
Color Mode	4, 8 colors					
Ink	Disperse ink, Latex ink, Pigment ink					
Ink Capacity	40 L 15 L					

MATERIAL | WINDING | DRYING

Material Information	Max. Media Width	Max. Print Width	Applicable Media Weight	Max. Media weight
	1900 mm	1800 mm	Minimum 29 g	1.2 T(full with)
Maximum Unwind Roll Diameter	1 m			
Print Media	Dye-sublimation paper, Titanium white paper, Wallpaper, Film etc.			
Maximum Wind Roll	2000 meters per roll (diameter approximately 360mm) (38g Guanhao paper)			
Drying Method	Constant temperature hot air			
Conveyor Method	Roll to Roll			

ELECTRICITY | AIR | WATER

Printer Voltage	AC380V±10%, three-phase 11.5 A(6 kW) 50/60 Hz
Dryer Voltage	AC380V±10%, three-phase 14 A(9.3 kW) 50/60 Hz
Compressed Air Supply	0.6 MPa 1 m ³ /hr (dry,oil-free and moisture-free)
Cable Requirements	Printer / Dryer: 5*6 mm ²

PEINTER ENVIRONMENT

Temperature	20-28°C(68-82°F)
Humidity	45-60%(non-condensing)

INSTALLATION | DIMENSIONS | Weight

Printer Measurement	3945 mm*1000 mm*1718 mm(L*W*H)
Printer Measurement with Packing	4180 mm*1500 mm*2160 mm(L*W*H)
Feeder Measurement	2403 mm*1200 mm*1100 mm(L*W*H)(10000-meter roll device)
Feeder Measurement with Packing	2590 mm*1620 mm*1450 mm(L*W*H)
Installation Site Requirement	4500 mm*4500 mm(L*W) (Not a standard requirement for machine installation and can be flexibly adjusted based on on-site conditions.)
Printer Net Weight	2.0 T
Printer Weight With Packing	2.8 T

Unicorn 1812 | Parameters

High Speed Roll-to-roll Dye-sublimation Printer

PRINTING INFORMATION

Printhead	12 Heads Industrial Grade Piezoelectric Printhead					
Print Mode	Single/Dual direction					
Resolution(DPI)	400*600 (1pass)	508*600 (1pass)	600*600 (1pass)	400*1200 (2pass)	508*1200 (2pass)	600*1200 (2pass)
Max. Print Speed(m ² /hr)	666	568	494	333	275	247
Color	CMYK					
Color Mode	4, 6 colors					
Ink	Disperse ink, Latex ink, Pigment ink					
Ink Capacity	40 L 15 L					

MATERIAL | WINDING | DRYING

Material Information	Max. Media Width	Max. Print Width	Applicable Media Weight	Max. Media weight
	1900 mm	1800 mm	Minimum 29 g	1.2 T(full with)
Maximum Unwind Roll Diameter	1 m			
Print Media	Dye-sublimation paper, Titanium white paper, Wallpaper, Film etc.			
Maximum Wind Roll	2000 meters per roll (diameter approximately 360mm) (38g Guanhao paper)			
Drying Method	Constant temperature hot air			
Conveyor Method	Roll to Roll			

ELECTRICITY | AIR | WATER

Printer Voltage	AC380V±10%, three-phase 11.5 A(6 kW) 50/60 Hz
Dryer Voltage	AC380V±10%, three-phase 14 A(9.3 kW) 50/60 Hz
Compressed Air Supply	0.6 MPa 1 m ³ /hr (dry,oil-free and moisture-free)
Cable Requirements	Printer / Dryer: 5*6 mm ²

PEINTER ENVIRONMENT

Temperature	20-28°C(68~82°F)
Humidity	45-60%(non-condensing)

INSTALLATION | DIMENSIONS | Weight

Printer Measurement	3945 mm*1000 mm*1718 mm(L*W*H)
Printer Measurement with Packing	4180 mm*1500 mm*2160 mm(L*W*H)
Feeder Measurement	2403 mm*1200 mm*1100 mm(L*W*H)(10000-meter roll device)
Feeder Measurement with Packing	2590 mm*1620 mm*1450 mm(L*W*H)
Installation Site Requirement	4500 mm*4500 mm(L*W) <small>(Not a standard requirement for machine installation and can be flexibly adjusted based on on-site conditions.)</small>
Printer Net Weight	2.0 T
Printer Weight With Packing	2.8 T

Unicorn 1816 | Parameters

High Speed Roll-to-roll Dye-sublimation Printer

PRINTING INFORMATION

Printhead	8/12/16 Heads Industrial Grade Piezoelectric Printhead							
Print Mode	Single/Dual direction							
Resolution(DPI)	300*600 (1pass)	400*600 (1pass)	508*600 (1pass)	600*600 (1pass)	300*1200 (2pass)	400*1200 (2pass)	508*1200 (2pass)	600*1200 (2pass)
Max. Print Speed(m ² /hr)	745	682	589	499	413	381	313	260
Color	CMYK							
Color Mode	4,6, 8 colors							
Ink	Disperse ink, Latex ink, Pigment ink							
Ink Capacity	15 L							

MATERIAL | WINDING | DRYING

Material Information	Max. Media Width	Max. Print Width	Applicable Media Weight	Max. Media weight
	1900 mm	1800 mm	Minimum 29 g	1.2 T(full with)
Maximum Unwind Roll Diameter	1 m			
Print Media	Dye-sublimation paper, Titanium white paper, Wallpaper, Film etc.			
Maximum Wind Roll	2000 meters per roll (diameter approximately 360mm) (38g Guanhao paper)			
Drying Method	Constant temperature hot air + auxiliary infrared drying			
Conveyor Method	Roll to Roll			

ELECTRICITY | AIR | WATER

Printer Voltage	AC380V±10%, three-phase 8.9 A(4.6 kW) 50/60 Hz
Dryer Voltage	AC380V±10%, three-phase 23 A(13 kW) 50/60 Hz
Compressed Air Supply	0.6 MPa 1 m ³ /hr (dry,oil-free and moisture-free)
Cable Requirements	Printer / Dryer: 5*6 mm ²

PEINTER ENVIRONMENT

Temperature	20-28°C(68~82°F)
Humidity	45-60%(non-condensing)

INSTALLATION | DIMENSIONS | Weight

Printer Measurement	4645 mm*1000 mm*2018 mm(L*W*H)
Printer Measurement with Packing	4883 mm*1500 mm*2160 mm(L*W*H)
Feeder Measurement	2403 mm*1200 mm*1100 mm(L*W*H)(10000-meter roll device)
Feeder Measurement with Packing	2590 mm*1620 mm*1450 mm(L*W*H)
Installation Site Requirement	5500 mm*5500 mm(L*W) <small>(Not a standard requirement for machine installation and can be flexibly adjusted based on on-site conditions.)</small>
Printer Net Weight	2.0 T
Printer Weight With Packing	2.8 T

Unicorn 2708 | Parameters

High Speed Roll-to-roll Dye-sublimation Printer

PRINTING INFORMATION

Printhead	4/8 Heads Industrial Grade Piezoelectric Printhead					
Print Mode	Single/Dual direction					
Resolution(DPI)	400*600 (1pass)	508*600 (1pass)	600*600 (1pass)	300*1200 (2pass)	400*1200 (2pass)	508*1200 (2pass)
Max. Print Speed(m ² /hr)	870	726	612	490	459	367
Color	CMYK					
Color Mode	4, 8 colors					
Ink	Disperse ink, Latex ink, Pigment ink					
Ink Capacity	15 L					

MATERIAL | WINDING | DRYING

Material Information	Max. Media Width	Max. Print Width	Applicable Media Weight	Max. Media weight
	2630 mm	2600 mm	Minimum 29 g	1.2 T(full with)
Maximum Unwind Roll Diameter	1 m			
Print Media	Dye-sublimation paper, Titanium white paper, Wallpaper, Film etc.			
Maximum Wind Roll	2000 meters per roll (diameter approximately 360mm) (38g Guanhao paper)			
Drying Method	Constant temperature hot air			
Conveyor Method	Roll to Roll			

ELECTRICITY | AIR | WATER

Printer Voltage	AC380V±10%, three-phase 11.5 A(6 kW) 50/60 Hz
Dryer Voltage	AC380V±10%, three-phase 20.8 A(13.7 kW) 50/60 Hz
Compressed Air Supply	0.6 MPa 1 m ³ /hr (dry,oil-free and moisture-free)
Cable Requirements	Printer / Dryer: 5*6 mm ²

PEINTER ENVIRONMENT

Temperature	20-28°C(68~82°F)
Humidity	45-60%(non-condensing)

INSTALLATION | DIMENSIONS | Weight

Printer Measurement	4728 mm*1257 mm*2018 mm(L*W*H)
Printer Measurement with Packing	4940 mm*1440 mm*2120 mm(L*W*H)
Feeder Measurement	3153 mm*1200 mm*1100 mm(L*W*H)(10000-meter roll device)
Feeder Measurement with Packing	3340 mm*1355 mm*1385 mm(L*W*H)
Installation Site Requirement	5000 mm*4500 mm(L*W) <small>(Not a standard requirement for machine installation and can be flexibly adjusted based on on-site conditions.)</small>
Printer Net Weight	2.0 T
Printer Weight With Packing	2.8 T

Unicorn 3208 | Parameters

High Speed Roll-to-roll Dye-sublimation Printer

PRINTING INFORMATION

Printhead	4/8 Heads Industrial Grade Piezoelectric Printhead							
Print Mode	Single/Dual direction							
Resolution(DPI)	300*600 (1pass)	400*600 (1pass)	508*600 (1pass)	600*600 (1pass)	300*1200 (2pass)	400*1200 (2pass)	508*1200 (2pass)	600*1200 (2pass)
Max. Print Speed(m ² /hr)	1021	921	778	398	550	496	398	335
Color	CMYK							
Color Mode	4, 8 colors							
Ink	Disperse ink, Latex ink, Pigment ink							
Ink Capacity	15 L							

MATERIAL | WINDING | DRYING

Material Information	Max. Media Width	Max. Print Width	Applicable Media Weight	Max. Media weight
	3200 mm	3200 mm	Minimum 29 g	1.2 T(full with)
Maximum Unwind Roll Diameter	1 m			
Print Media	Dye-sublimation paper, Titanium white paper, Wallpaper, Film etc.			
Maximum Wind Roll	2000 meters per roll (diameter approximately 360mm) (31g Xianhe paper)			
Drying Method	Constant temperature hot air + auxiliary infrared drying			
Conveyor Method	Roll to Roll			

ELECTRICITY | AIR | WATER

Printer Voltage	AC380V±10%, three-phase 15 A(7.5 kW) 50/60 Hz
Dryer Voltage	AC380V±10%, three-phase Hot air:28 A(17 kW); Infrared auxiliary:14 A(8 kW) 50/60Hz
Compressed Air Supply	0.6 MPa 1 m ³ /hr (dry,oil-free and moisture-free)
Cable Requirements	Printer / Dryer: 5*6mm ² (printer and dryer take power separately)

PEINTER ENVIRONMENT

Temperature	20-28°C(68~82°F)
Humidity	45-60%(non-condensing)

INSTALLATION | DIMENSIONS | Weight

Printer Measurement	5300 mm*1000 mm*2018 mm(L*W*H)
Printer Measurement with Packing	5540 mm*1440 mm*2120 mm(L*W*H)
Feeder Measurement	3753 mm*1200 mm*1100 mm(L*W*H)(10000-meter roll device)
Feeder Measurement with Packing	3940 mm*1355 mm*1385 mm(L*W*H)
Installation Site Requirement	7300 mm*5000 mm(L*W) <small>(Not a standard requirement for machine installation and can be flexibly adjusted based on on-site conditions.)</small>
Printer Net Weight	2.0 T
Printer Weight With Packing	2.8 T